

በካርታ ላይ የግሪንላንድ ጋርታ ለግሪንላንድ ኮንፎረንስ ለግሪንላንድ ስብሰባ
የግሪንላንድ ጋርታ ስብሰባ
የግሪንላንድ ጋርታ ስብሰባ
ግሪንላንድ 2015

**BQCMB Presentation
Kiggavik Final Hearing
Community Roundtable**

Baker Lake, NU

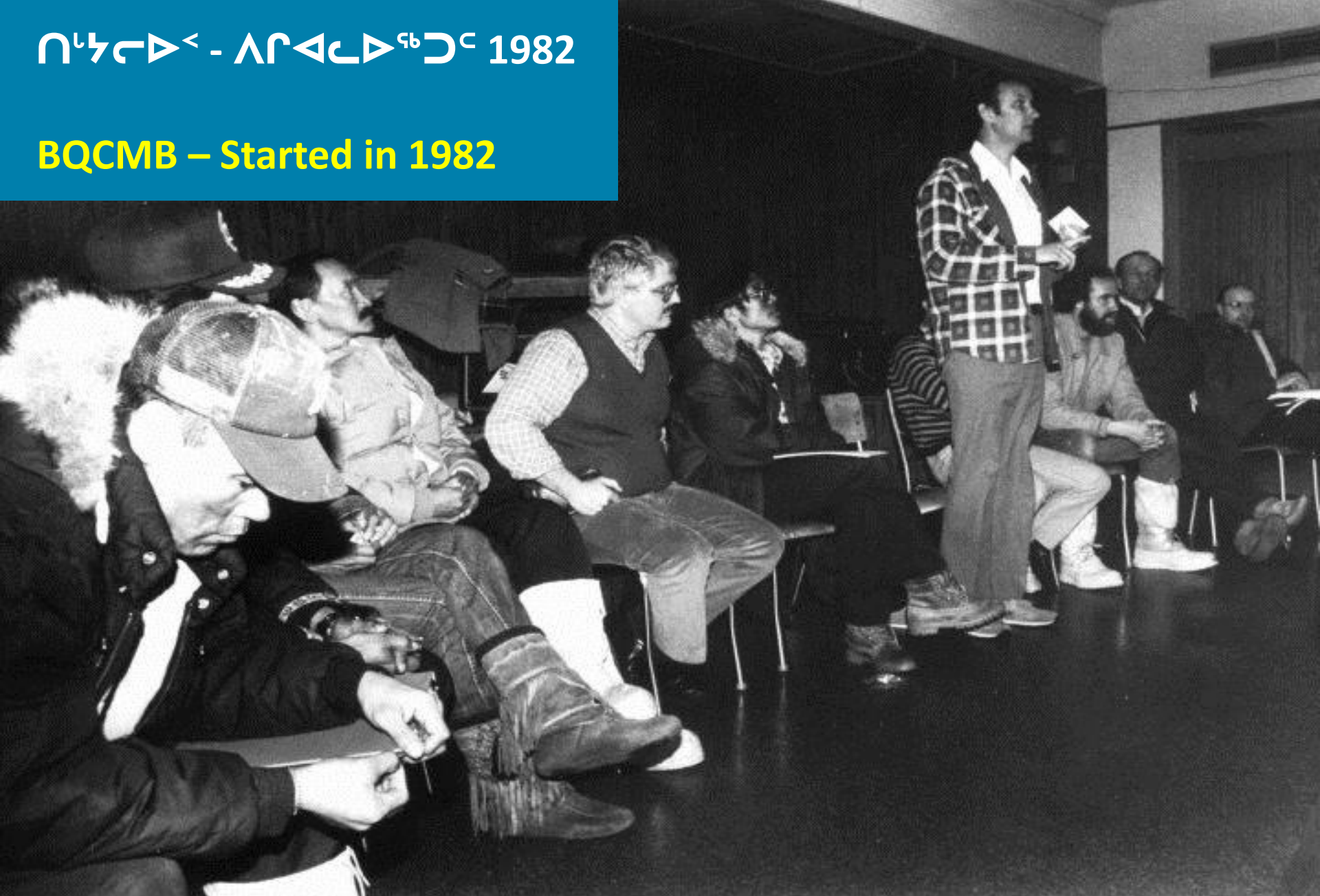
March 2015



Photo by R. Mulders

חילתא - ארבעה עשר 1982

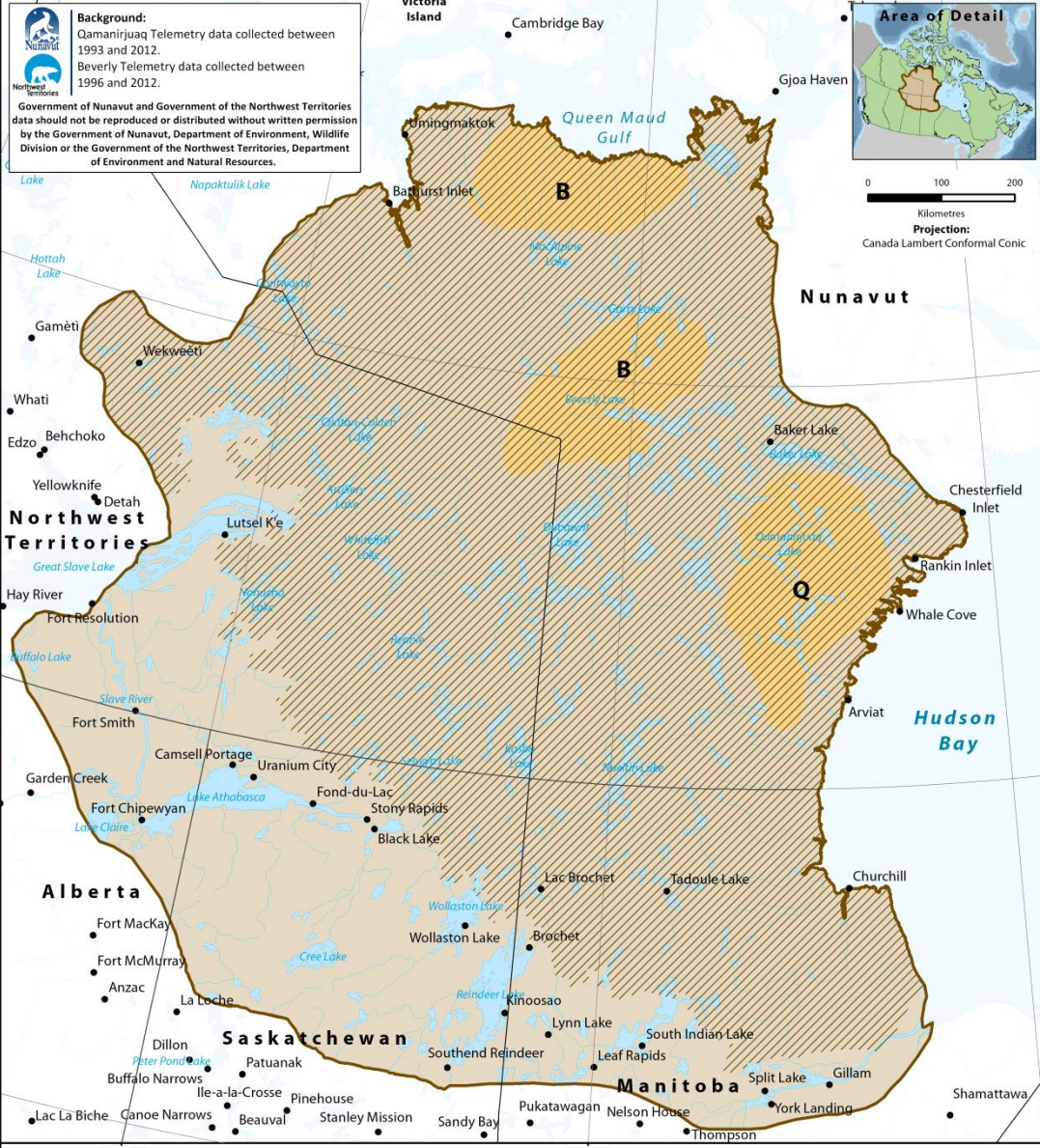
BQCMB – Started in 1982



በካርታጋ ልዩ ግብርናዊ ጉዞ ለግብርናዊ ልማት ለማድረግ ለሚገኙት ግለሰቦች ጋር ለመገናኛት ሲሆን ለግብርናዊ ልማት ለማድረግ ለሚገኙት ግለሰቦች ጋር ለመገናኛት ሲሆን

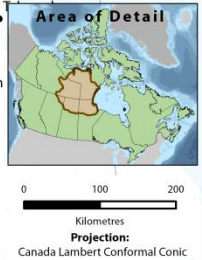


**BQCMB is concerned about both:
*the future of caribou and
people who depend on caribou***



Background:
 Qamanirjuaq Telemetry data collected between 1993 and 2012.
 Beverly Telemetry data collected between 1996 and 2012.

Government of Nunavut and Government of the Northwest Territories data should not be reproduced or distributed without written permission by the Government of Nunavut, Department of Environment, Wildlife Division or the Government of the Northwest Territories, Department of Environment and Natural Resources.



LEGEND

- Calving grounds of the Beverly (B) and Qamanirjuaq (Q) herds
- Beverly and Qamanirjuaq Caribou Ranges based on government surveys 1940s-2011, telemetry data 1993-2012, and traditional knowledge
- Community

Generalized range used 1993-2012 based on locations of collared adult female caribou monitored by telemetry and calving ground surveys

Note for interpreting the map
 It is important to note that the map is based on telemetry locations for a small number of adult female caribou that have been collared and tracked by satellite for a limited time period. As a result of these limitations, an area mapped without caribou locations does not necessarily indicate a lack of use or low importance to caribou. It could simply be an area where collared animals have not been located and could potentially be an area of high use by non-collared animals.

ᐱᓴᓕᐅᓪᓴᓴᓴ ᓴᓴᓴᓴ ᓴᓴᓴᓴᓴᓴᓴᓴ ᓴᓴᓴᓴᓴᓴᓴᓴ ᓴᓴᓴᓴᓴᓴᓴᓴ ᓴᓴᓴᓴᓴᓴᓴᓴ

Beverly and Qamanirjuaq Caribou Habitats



Photo by D. Thomas



Photo by D. Thomas



Photo by J. Stephenson



Photo by T. Trottier



Photo by R. Mulders

Caribou: A shared resource

כ״כ:

CLΔ°σ^c Δב׳C▷׳^ב



Photo by J. Stephenson

ᐅᓴᑦᓂᐱᑦᐅᑦ ᐱᑦᑎᐱᑦᓂᑦ ᐱᓴᓴᑦᐅᓴᑦ

- ᐱᑦᓂᑦᓴᑦ
- ᓂᑦᑦ ᐱᑦᓂᑦ
- ᑦᑎᐱᑦᓂᑦ ᐱᑦᓂᑦᓴᑦ ᐅᑦᓴᑦ
- ᑎᑦᐅᑦᑦᐱᑦ ᐱᑦᑦᑦᐱᑦᓂᑦ
- ᓴᑦᑦᑦᑦ ᓂᑦᓴᑦᐅᑦ ᐅᓴᑦᓂᑦᐱᑦᓂᑦ ᓂᑦᓴᑦᐱᑦ ᓂᑦᓴᑦ

Project Features of Primary Concern

- large size
- new roads
- unknown start date
- will increase development in region
- first uranium project on tundra in Nunavut



Photo courtesy of CARMA – K. Joly

ل.ع.

Thank -you

