



Beverly & Qamanirjuaq Caribou Management Board

**Presentation to:
NIRB's Uravan-Garry Lakes
Scoping and Guideline Development
Workshop**

5 November 2008, Baker Lake NU

**Presented by: Ross Thompson, BQCMB
Secretary-Treasurer**

Presentation Outline



Part A:

1) Background on BQCMB

2) Information about Beverly caribou and caribou range

Part B:

BQCMB's concerns and recommendations regarding mineral exploration and the Uravan-Garry Lakes proposal

(1) Beverly & Qamanirjuaq Caribou Mgmt Board

What is the BQCMB?

- **Cooperative partnership between 20 communities and 5 governments**
- **Co-management advisory board established more than 25 years ago (in 1982)**

Chair: Jerome Denechezhe, Lac Brochet, Manitoba

Vice-chair: Daryll Hedman, Manitoba Conservation

Beverly & Qamanirjuaq Caribou Management Board (www.arctic-caribou.com)



(1) Beverly & Qamanirjuaq Caribou Mgmt Board

Why is the BQCMB participating in this review process?

BQCMB Mandate:

- To advise governments and communities on conservation and management of the Beverly and Qamanirjuaq caribou herds and their ranges.

BQCMB Goal:

- Caribou for the future!



(1) Beverly & Qamanirjuaq Caribou Mgmt Board

The BQCMB is *not* against mining

The BQCMB believes that we should *work together* to protect the caribou herds and their ranges.



(2) Beverly Caribou Herd

Harvest and Economic Value:

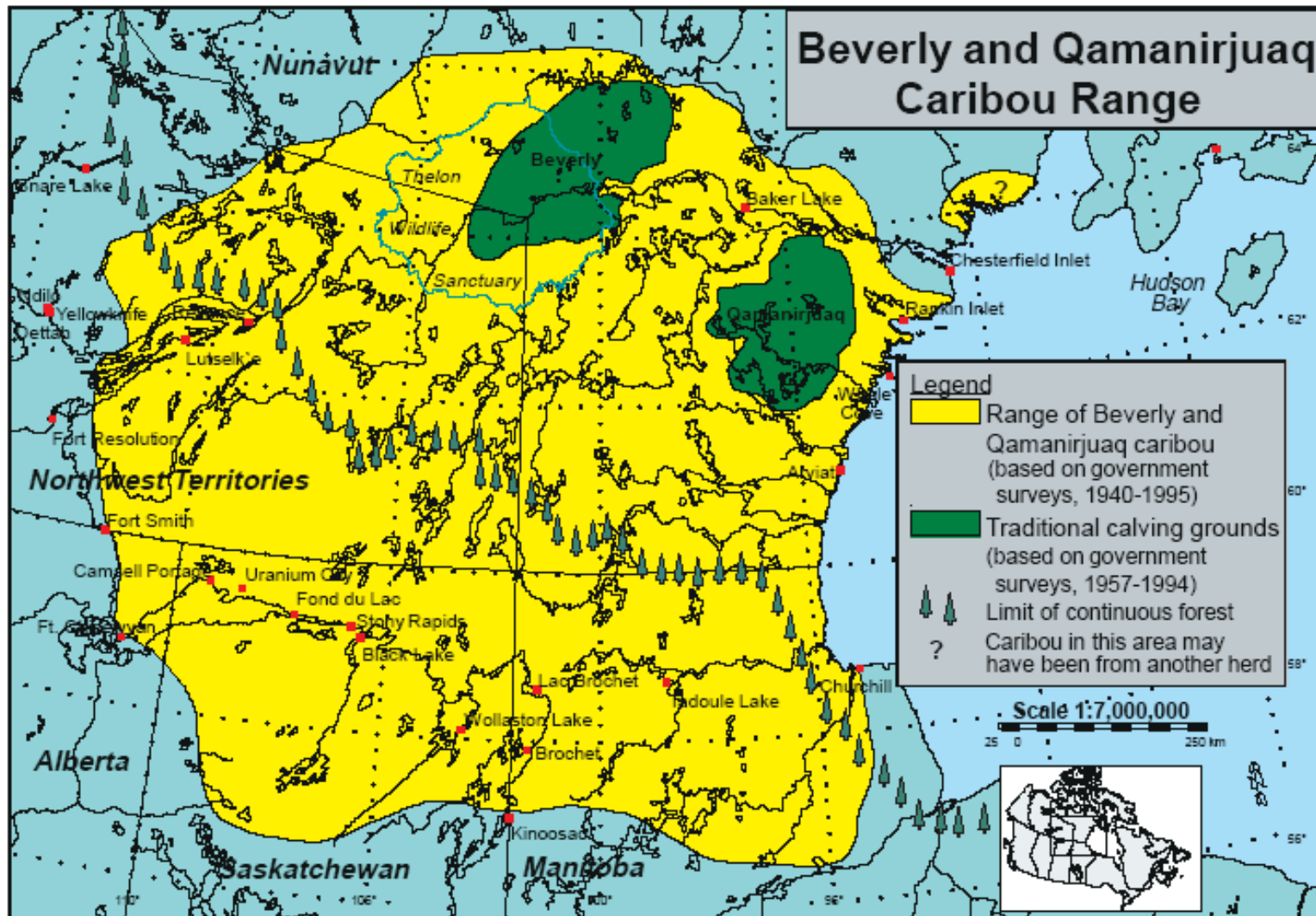
**Beverly
caribou
harvested
2005-06:**

3,800



Net economic value of annual harvest:
\$5 million

Map showing combined year-round ranges of two caribou herds



Range includes: about 20 communities in 2 territories and 2 provinces
 BQCMB: 10 community members (traditional harvesters), 5 government members

(2) Beverly Caribou Herd

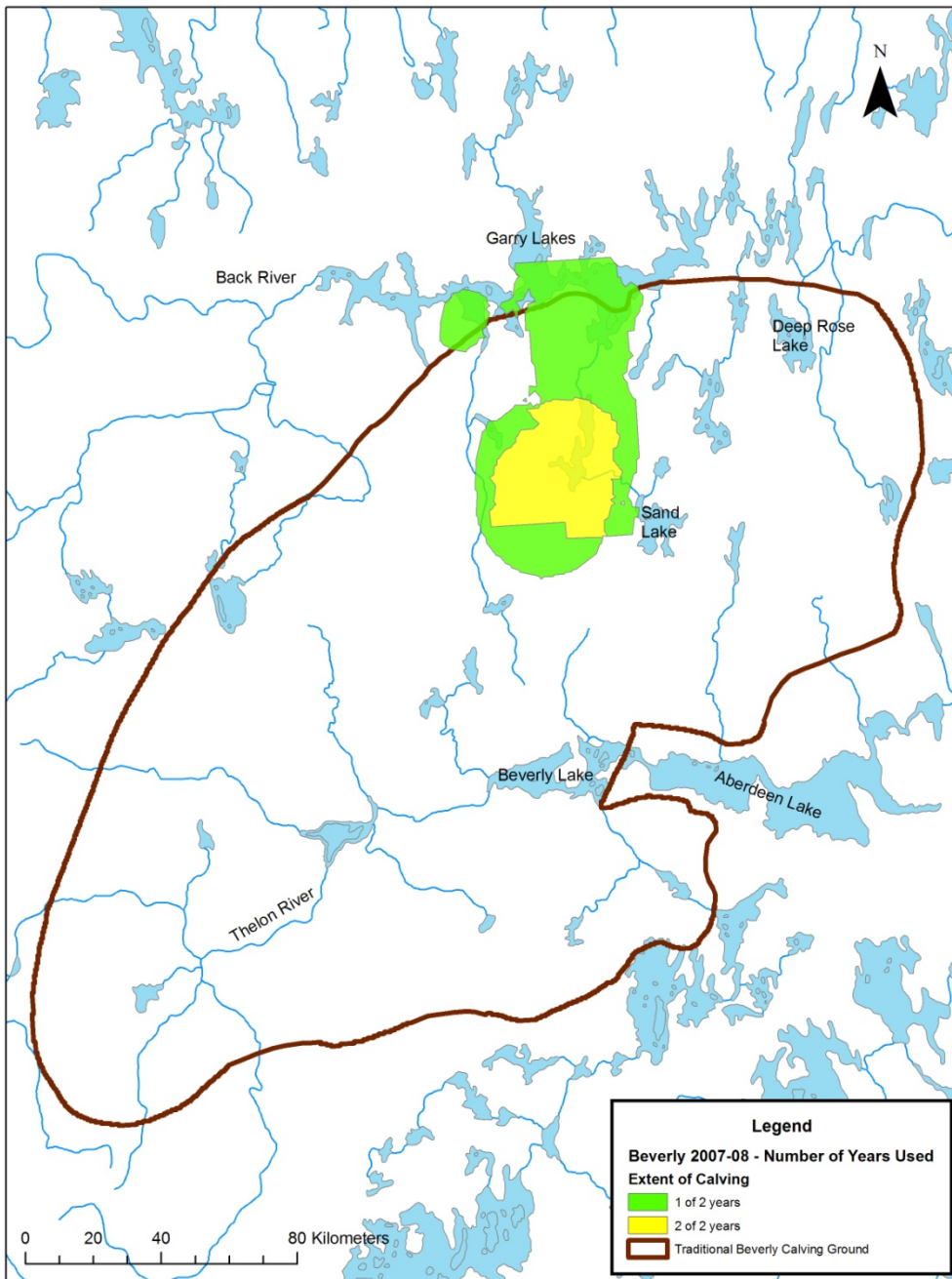
Information from recent surveys of the Beverly caribou herd

Status of the Beverly herd

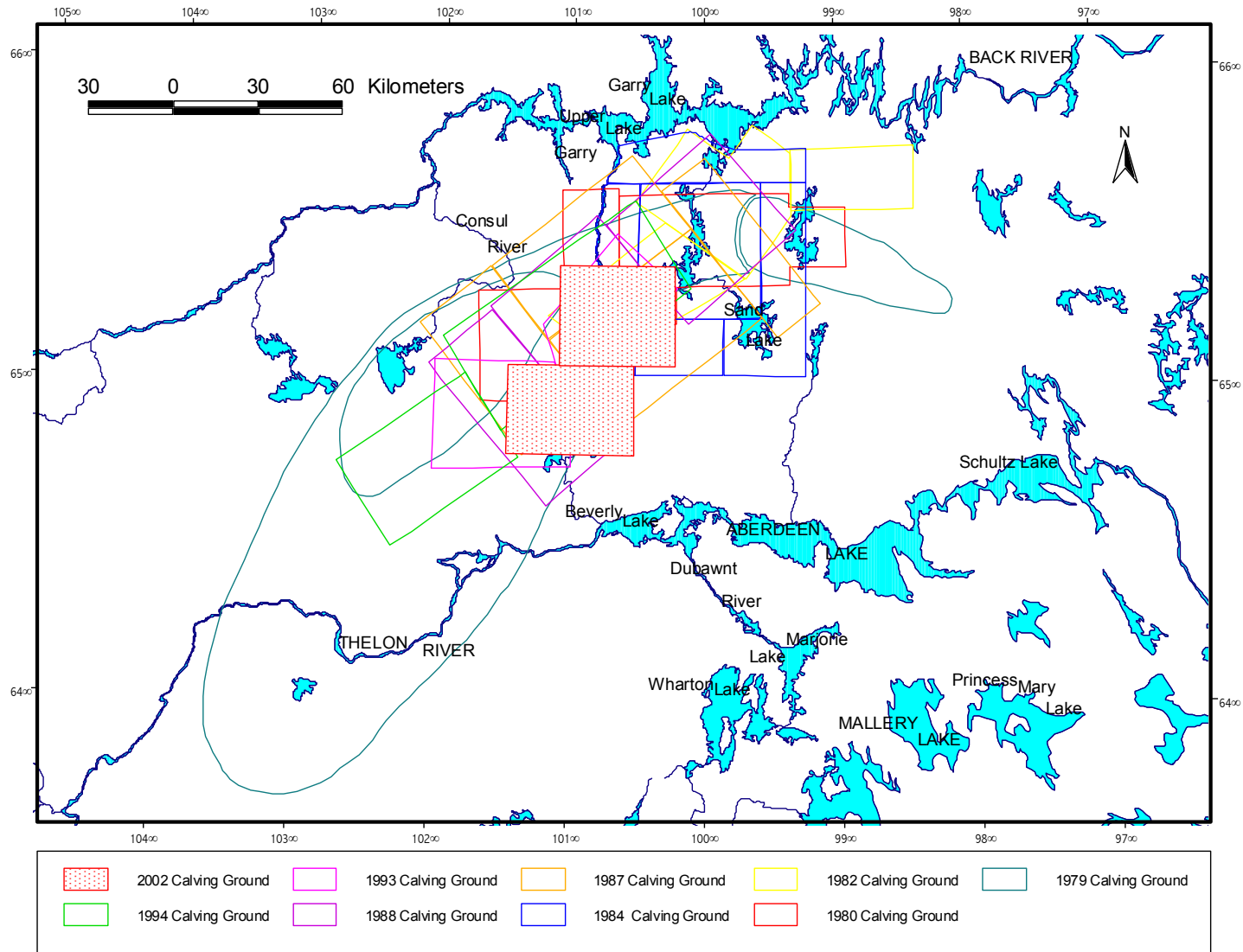


Survey Information for the Calving Ground of the Beverly Herd 2002-2008

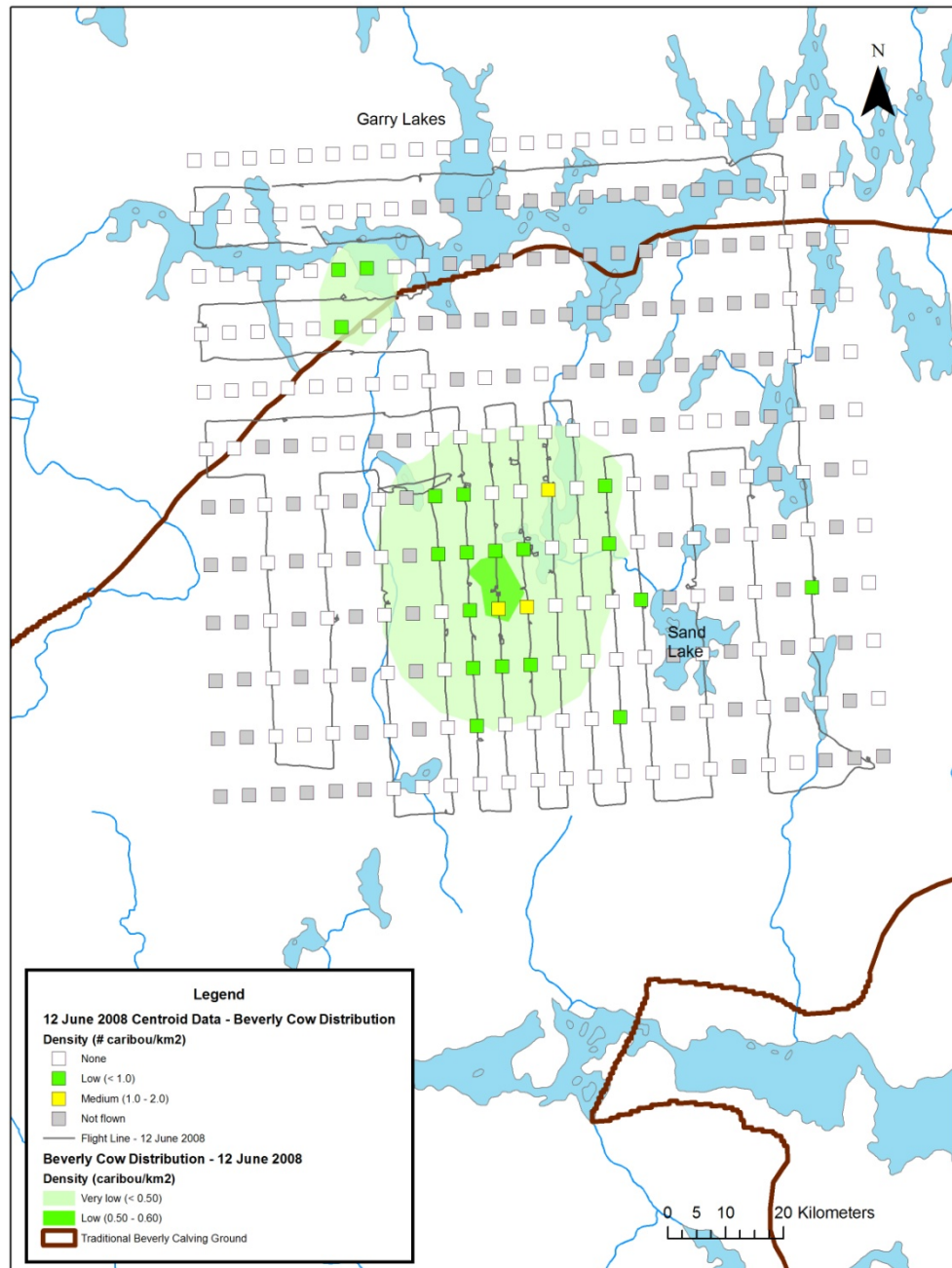
Surveys and Maps
from
Deborah Johnson
Government of the NWT
regional biologist ,
Ft. Smith, NWT

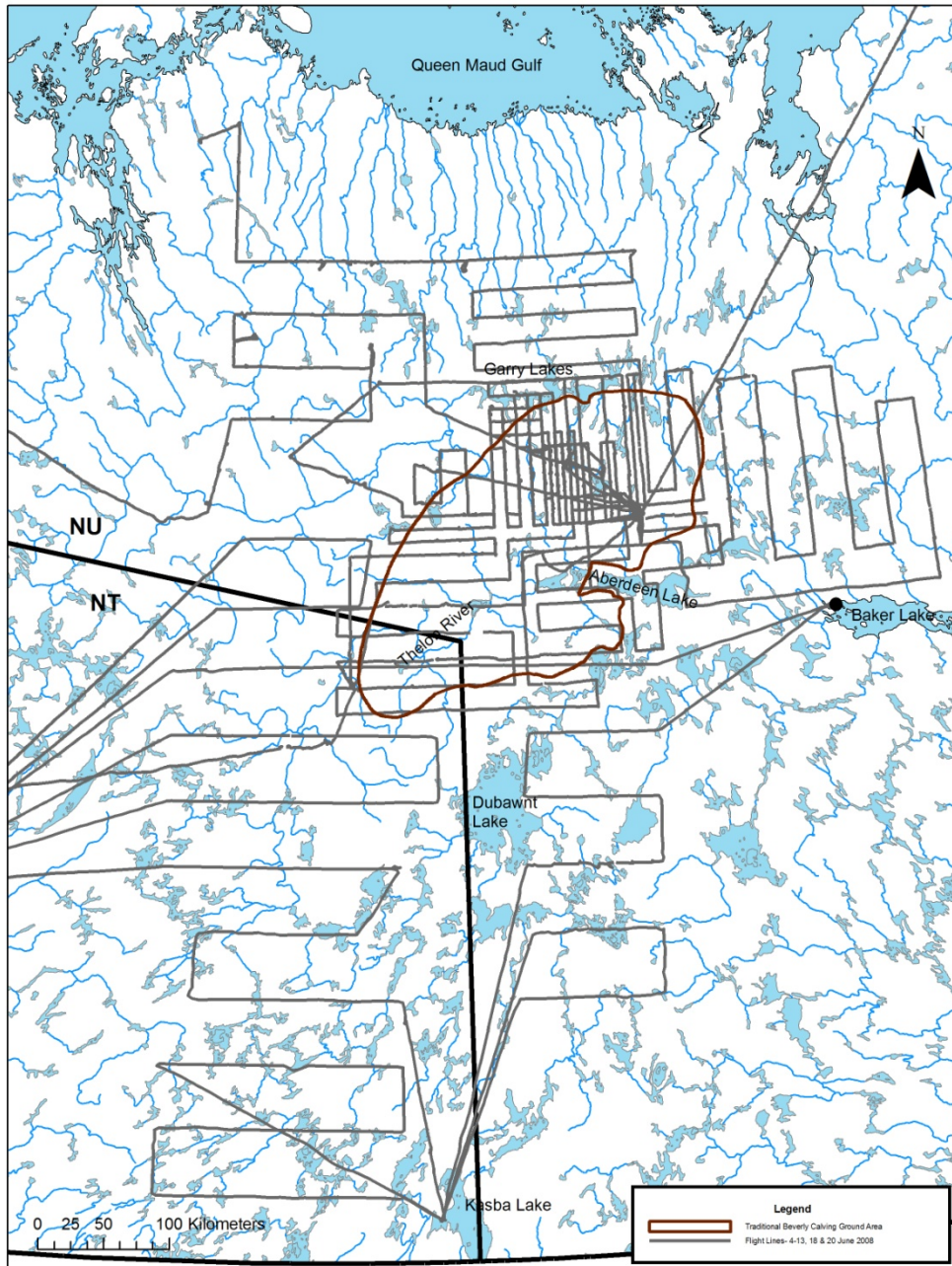


2002 Beverly Calving Ground Survey (compared to 1979-1994)



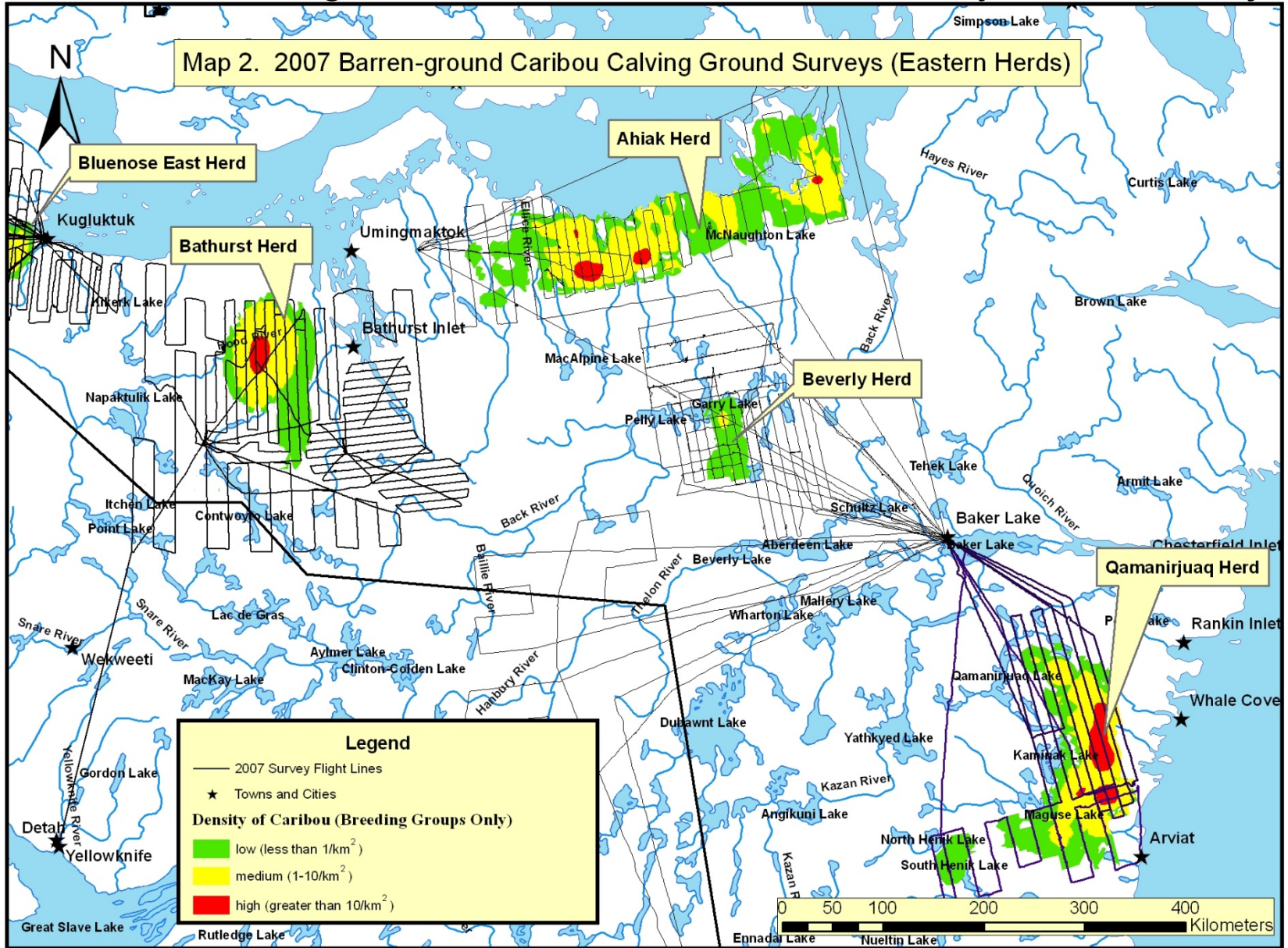
Calving Ground Survey of the Beverly Herd in June 2008

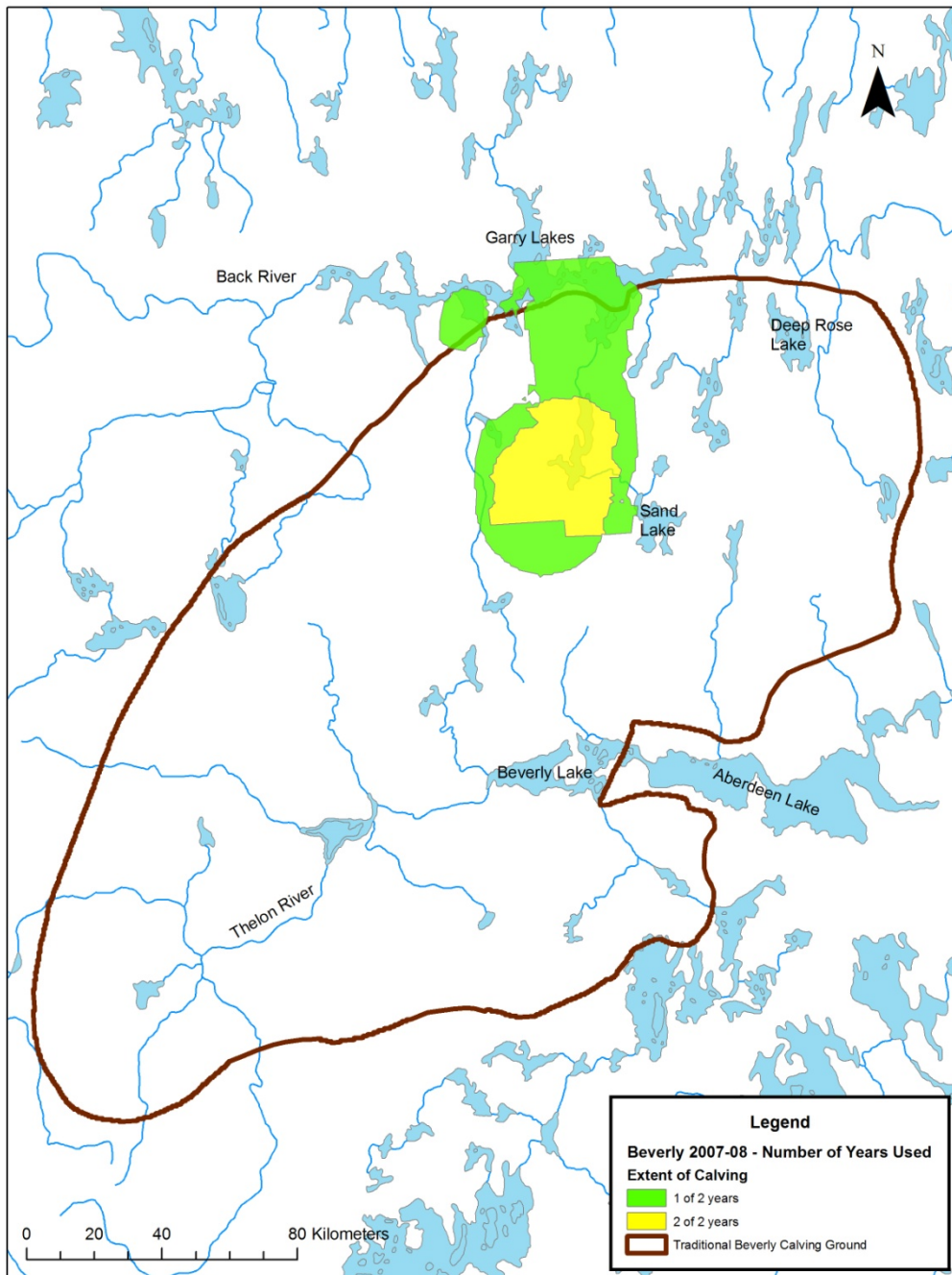




**Beverly
Calving Ground
Survey
June 2008:
Additional Areas Flown**

2007 Caribou Calving Grounds - Bathurst, Ahiak, Beverly and Qamanirjuaq





Numbers of caribou (non-calf) seen on transect on the Beverly calving grounds in June

<u>Year</u>	<u>No. caribou</u>
1994:	5,737
2002:	2,629
2007:	189
2008:	93

Calf:cow ratio in 2008:

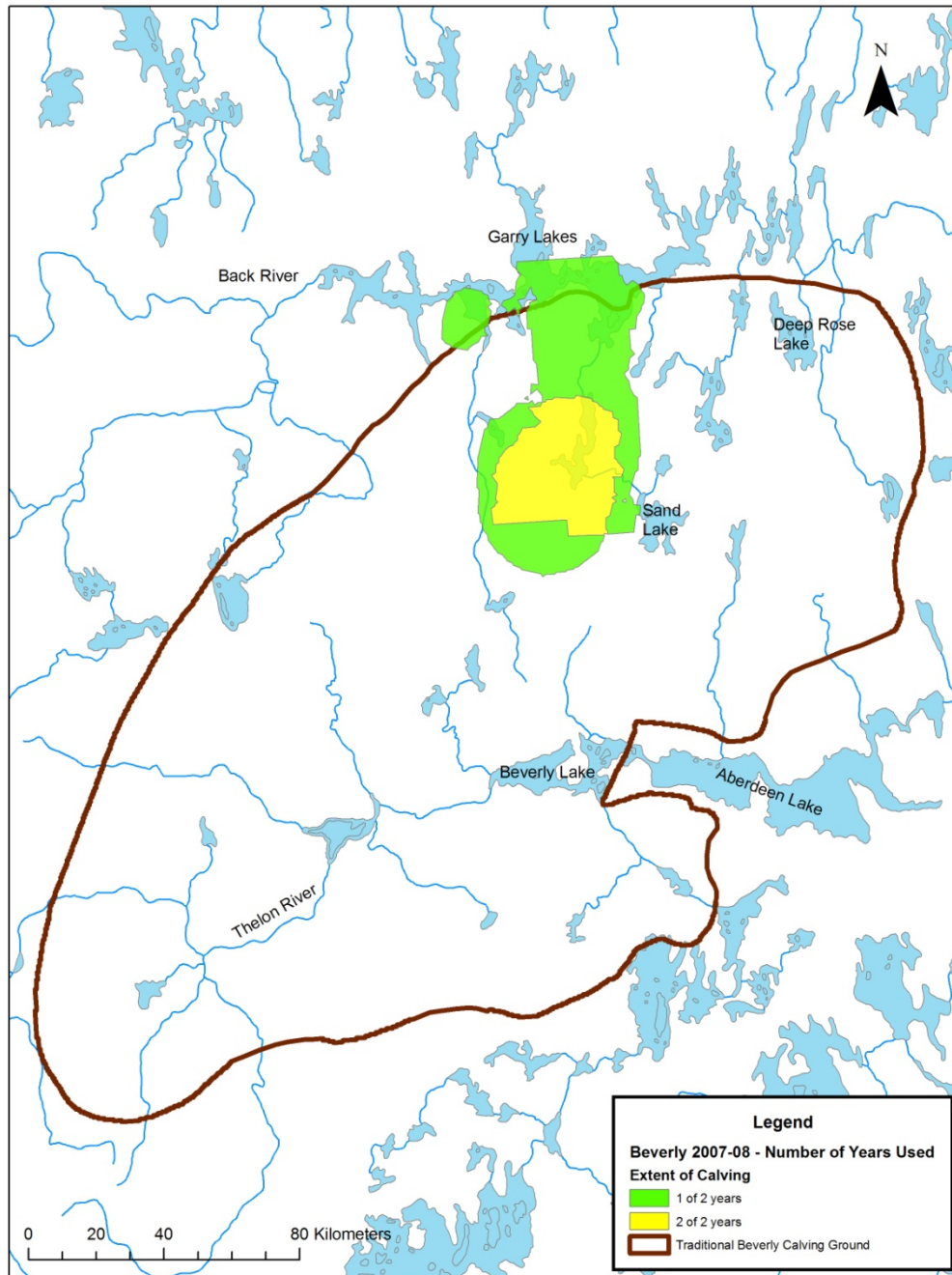
15 calves:100 cows

(93 cows, 14 calves)

Decline of the Beverly Herd: *What Happened?*

- May never know
- Part of natural cycle?
- Hunter harvest?
- Switch to Ahiak calving ground?
- Exploration and development?

Note: Beverly calving ground in 2008 small but distinct from other calving grounds



(2) Beverly Caribou Herd

Low ecological resilience in the Beverly herd:

- low and declining numbers
- few calves
- part of herd may have already abandoned its traditional range

We need to give the Beverly herd the opportunity to recover.



BQCMB Presentation



Part B:

- 1) BQCMB concerns about potential mineral exploration impacts on Beverly caribou**
- 2) BQCMB position and recommendations for protecting Beverly caribou**
- 3) Specific recommendations for NIRB regarding the Uravan-Garry Lakes proposal**

(1) Mineral Exploration and Beverly Caribou

The BQCMB is very concerned about the potential impacts of ongoing and proposed mineral exploration on:

- **Beverly caribou**
- **Important Beverly caribou habitat**
- **People that depend on Beverly caribou (traditional hunters in NU, NWT, SK).**



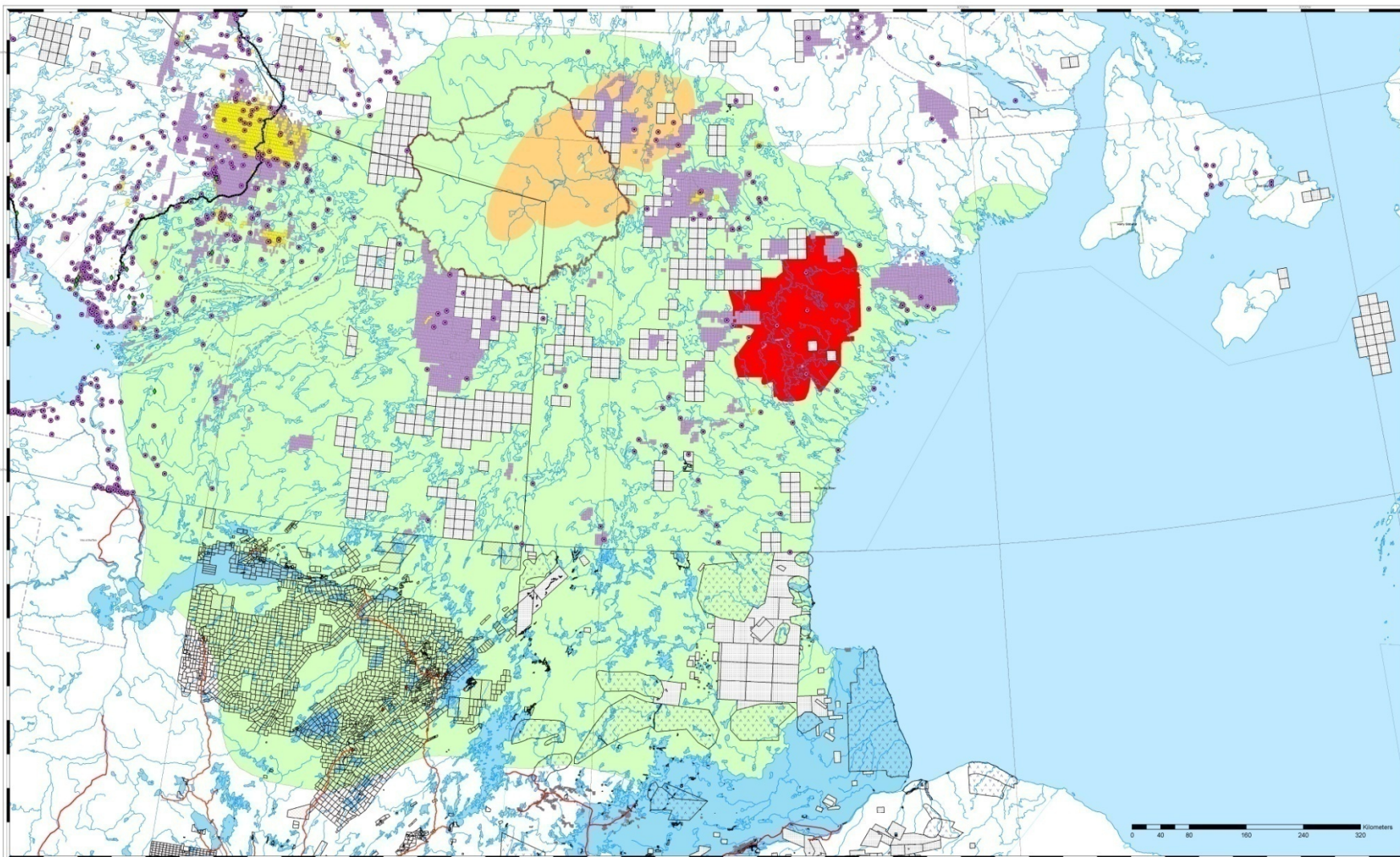
(1) Mineral Exploration and Beverly Caribou

Why are we concerned?

- **The Beverly herd is in an extremely vulnerable state.**
- **Human land use activities are increasing across the Beverly caribou range, especially mineral exploration and roads.**



Land Use Activities on Beverly and Qamanirjuaq Caribou Ranges



Legend

- | | | | |
|--------------------|---|--|---|
| ◆ Mine Locations | ■ Mineral Leases | ▭ National Parks and Proposed National Parks | ■ Traditional Calving Ground of Qamanirjuaq Caribou |
| ● Land Use Permits | ■ Mineral Claims | ▭ Thelon Wildlife Sanctuary | ■ Traditional Calving Ground of Beverly Caribou |
| --- Winter Roads | ▭ Prospecting Permits | ▭ Bird Sanctuaries | ■ Range of Qamanirjuaq and Beverly Herds |
| — Major Roads | ▭ Saskatchewan's Mineral Claims and Permits | ▭ Mining Restricted | |

Map created by IMAG, DIAND
 Yellowknife, NT
 Oct 25, 2007
 File: G:\arcdata\mark\Cariboununavut2007oct.mxd



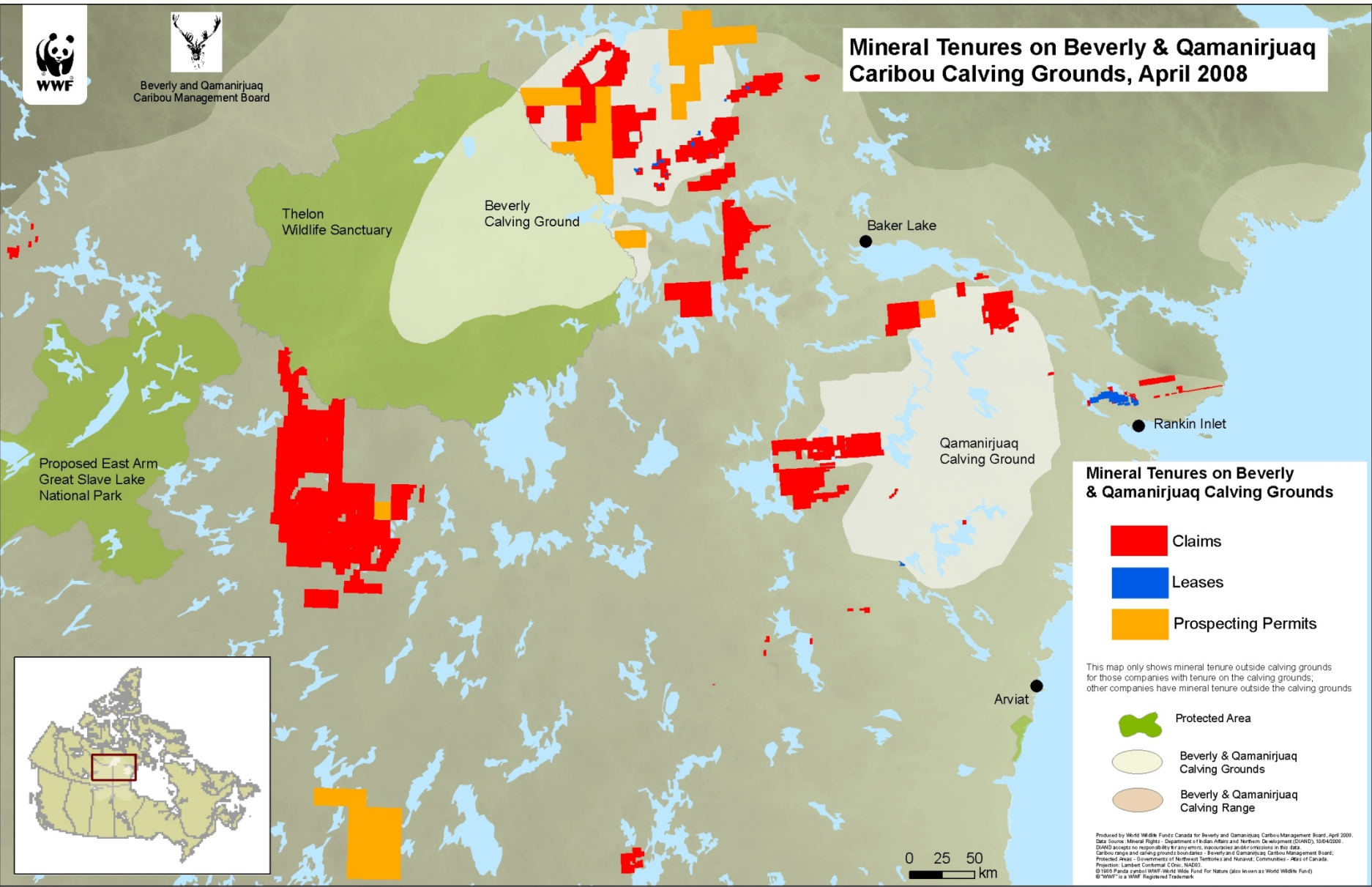
This map is to be used for illustrative purposes only. The information on this map may not be exactly as shown. DIAND is not responsible for any errors or discrepancies occurring on this map.



Beverly and Qamanirjuaq
Caribou Management Board



Mineral Tenures on Beverly & Qamanirjuaq Caribou Calving Grounds, April 2008



Mineral Tenures on Beverly & Qamanirjuaq Calving Grounds

- Claims
- Leases
- Prospecting Permits

This map only shows mineral tenure outside calving grounds for those companies with tenure on the calving grounds; other companies have mineral tenure outside the calving grounds.

- Protected Area
- Beverly & Qamanirjuaq Calving Grounds
- Beverly & Qamanirjuaq Calving Range

Produced by World Wildlife Fund Canada for Beverly and Qamanirjuaq Caribou Management Board, April 2008.
Data Source: Mineral Rights - Department of Indian Affairs and Northern Development (DIAND), 12/04/2007.
DIAND accepts no responsibility for any errors, inaccuracies and/or omissions in this data.
Caribou logo and styling provided by Beverly and Qamanirjuaq Caribou Management Board.
Protected Areas - Government of Northwest Territories and Nunavut, Communities - Atlas of Canada.
Projection: Lambert Conformal Conic, NAD83.
© 1999 Panda symbol WWF-World Wide Fund For Nature (also known as World Wildlife Fund)
© WWF is a WWF Registered Trademark





Beverly and Qamanirjuaq
Caribou Management Board

Mineral Tenures on Beverly Caribou Calving Ground (April 2008)



Owners of Mineral Tenures on Beverly Calving Ground

 Aurora Geosciences Ltd.	 McMillan, Ronald
 Bayswater Uranium Corp.	 Ruby Hill Exploration Inc.
 Cameco Corp.	 Strongbow Exploration Inc.
 Fekete, Mark	 Titan Uranium Inc.
 Indicator Minerals Inc.	 Uravan Minerals Inc.

This map only shows mineral tenure on the calving grounds;
other mineral tenures exist in the region that are not displayed.



Protected Area



Beverly Calving Ground

0 25 50
km

Produced by World Wildlife Funds Canada for Beverly and Qamanirjuaq Caribou Management Board, April 2008.
Data Source: Mineral Rights - Department of Indian Affairs and Northern Development (DIAND), 10/04/2008.
DIAND accepts no responsibility for any errors, inaccuracies and/or omissions in this data.
Caribou range and calving grounds boundaries - Beverly and Qamanirjuaq Caribou Management Board.
Protected Areas - Governments of Northwest Territories and Nunavut; Communities - Atlas of Canada.
Projection: Lambert Conformal Conic, NAD83
© 1988 Panda symbol WWF: World Wide Fund For Nature (also known as World Wildlife Fund)
© "WWF" is a WWF Registered Trademark

(1) Mineral Exploration and Beverly Caribou

What are we concerned about?

- 1) **Effects of mineral exploration and other land use activities, particularly at times when caribou are most vulnerable.**

- 2) **Cumulative impacts of land use activities on:**
 - **individual caribou and**
 - **caribou herds.**



(1) Mineral Exploration and Beverly Caribou

What do we mean by “cumulative impacts”?

- ***Combined environmental impacts from a series of similar or related activities that accumulate over time and space.***
- ***The combined effect of many small impacts can be serious.***



(2) BQCMB Position Paper

Main messages:

- 1) **Activities that could harm caribou or their important habitats should not be permitted.**

- 2) **It is especially important to protect areas needed for:**
 - **calving**
 - **taking care of young calves**



Why are we concerned about the Uravan-Garry Lakes project proposal specifically?

Uravan is proposing to:

- **increase its mineral exploration activities on the core Beverly calving ground**
- **operate during periods when the caribou are extremely vulnerable to disturbance (spring migration, calving, post-calving)**
- **request release from the Caribou Protection Measures**

(3) Specific Recommendations

BQCMB recommendations to NIRB:

1) Due to the drastic decline of the Beverly herd and concerns about cumulative effects, a ***precautionary approach*** must be applied.



(3) Specific Recommendations

BQCMB recommendations to NIRB:

2)Uravan' s permit application should be denied.

3)No further mineral exploration should be permitted on the traditional Beverly calving ground.



(3) Specific Recommendations

BQCMB recommendations:

- 4) **The Thelon Sanctuary Management Plan should be implemented.**
- 5) **The Beverly calving ground should receive long-term legislated protection.**



Protecting the Beverly Calving Ground: Recommendations from Others

- 1) NWT Barren-ground Caribou Summit (January 2007,) # 1 ranked priority:

Protect caribou calving grounds in NWT & Nunavut.

- 2) Dene Leadership resolution (December 2007):

Caribou calving grounds “must be protected from any impacts that will affect the herd during calving season”

- 3) DeBeers Commitment (October 2008) to *not operate on caribou calving grounds.*

- 4) Canada (federal govt) has urged the U.S. Congress repeatedly for many years to *protect the Porcupine caribou herd’s calving grounds.*



Photo A.Gunn

Actions required to help rebuild the Beverly caribou herd

- 1) Apply precautionary principle**
- 2) Reject Uravan's permit application**
- 3) Prohibit further mineral exploration and development on the calving ground**
- 4) Implement Thelon Game Sanctuary Management Plan**
- 5) Establish long-term protection for the Beverly calving ground in legislated protected areas**

